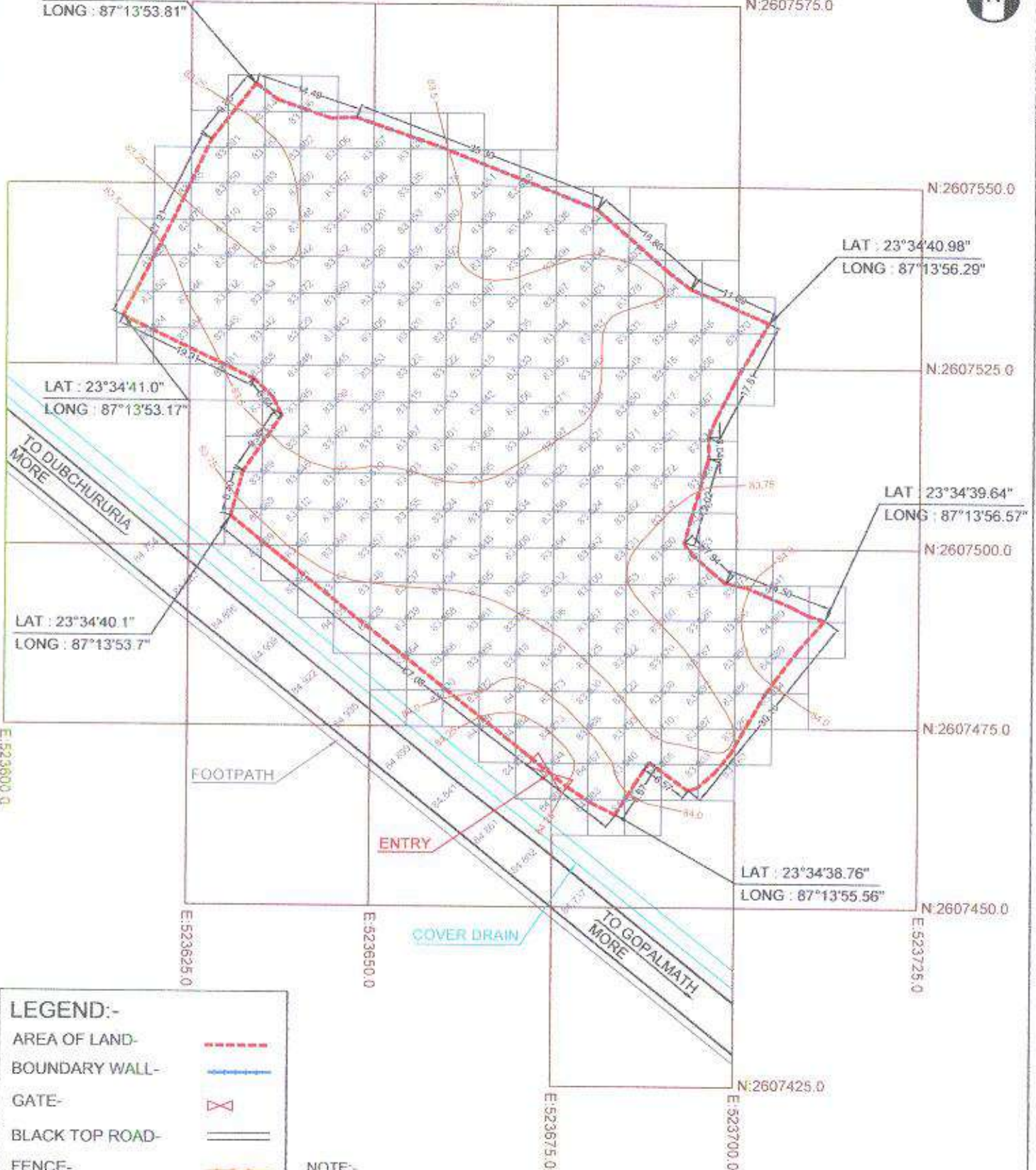


LAT : 23°34'42.04"
LONG : 87°13'53.81"

N:2607575.0



LAT : 23°34'41.0"
LONG : 87°13'53.17"

LAT : 23°34'40.98"
LONG : 87°13'56.29"

LAT : 23°34'40.1"
LONG : 87°13'53.7"

LAT : 23°34'39.64"
LONG : 87°13'56.57"

LAT : 23°34'38.76"
LONG : 87°13'55.56"

E:523600.0

E:523625.0

E:523650.0

E:523675.0

E:523700.0

N:2607425.0

E:523725.0

N:2607450.0

N:2607475.0

N:2607500.0

N:2607525.0

N:2607550.0

LEGEND:-

AREA OF LAND-	
BOUNDARY WALL-	
GATE-	
BLACK TOP ROAD-	
FENCE-	
DIMENSIONS-	
SPOT LEVEL-	
CONTOUR WITH VALUE-	

- NOTE:-**
1. THE UTM COORDINATES (WGS84) GETTING FROM DGPS HAVE CONSIDERED FOR SURVEY WORK
 2. ALL LEVELS HAVE TAKEN WITH RESPECT TO MSL
 3. ALL DIMENSIONS ARE IN METERS
 4. THE SURVEY IS ORIENTED W.R.T TRUE NORTH AND BEARING CALCULATED FROM DGPS CO-ORDINATES

NOTE:-
TOTAL AREA : 1.286 ACRES / 3.89 BIGHA.

DRAWING NO:-
GS/DELL/GOPALMATH/3.89 BIGHA/2022/1 OF 1

REV	CHK BY	APPV BY	ISSUED BY	DATE
R0	MB	RC	RC	JAN, 2022

SCALE 1:500

GLOBAL SURVEYORS
REGD OFFICE - SEARSOLE BABU PARA
P.O. - SEARSOLE RAJAPAL
DIST. - PASCHIM BARDHAMAN (WB)
PIN - 741012, 741011, 741010
EMAIL - info@globalurveyors.org
www.globalurveyors.org
LICENCE NO. 0917P44022212143
(UNDER AMC)

Disha Infrastructure Enterprise LLP

CLIENT -	DISHA INFRASTRUCTURE ENTERPRISE LLP DURGAPUR, DIST-PASCHIM BARDHAMAN, WB
TITLE -	DETAILED AS-BUILT TOPOGRAPHICAL SURVEY PLAN OF 1.286 ACRES LAND AT GOPALMATH, DURGAPUR, DIST-PASCHIM BARDHAMAN
PLACE -	GOPALMATH, DURGAPUR, DIST-PASCHIM BARDHAMAN, WB

Suren
[SURENDRANATH BANERJEE] Authorised Signatory

Das
GLOBAL SURVEYORS
"PUSPANJALI" SEARSOLE BABU PARA
PO-SEARSOLE RAJAPAL, PASCHIM BARDHAMAN, PIN-741012